

The Went's Meadow - Community Store Proposal

This is an outline for a joint project between Presteigne Town Council and Sheep Music to build a permanent store on Went's Meadow.

Went's Meadow is used as the location to hold community events put on by Sheep Music and the Carnival, as well as one off events and performances.

In 2019, in an earlier joint venture between the Town Council and Sheep Music, a Community Barn was built to provide a permanent venue for their events which avoided the need to rent marquees and other equipment, such as staging and flooring, in order to put them on.

The proposal is to build another smaller permanent structure next to the barn which will have the dual use of providing on-site storage for all the equipment needed to put on these events, which is currently stored off site, and to provide a space for serving hatches for either a bar or food.

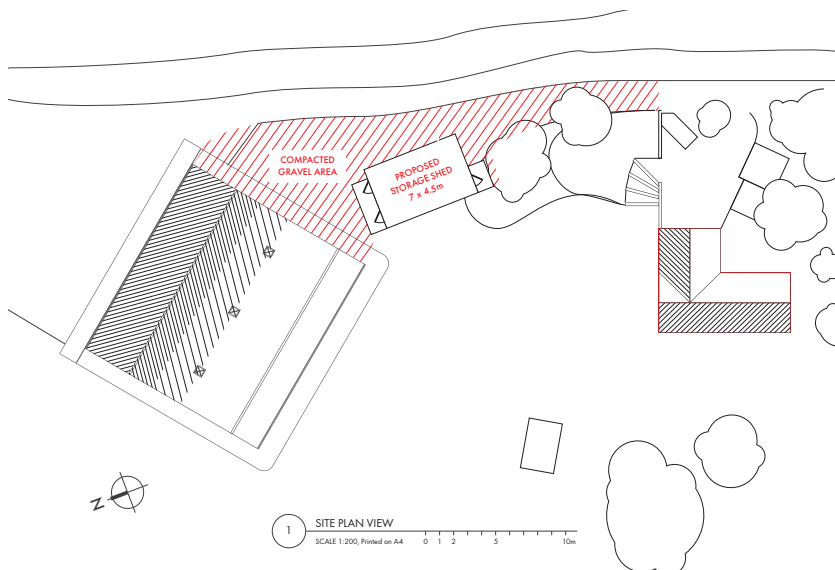
We would also apply to buy some new and additional equipment to encourage more community-based events down on the field by making it easier to set up and run such events.

BUILDING THE STORE

Sheep Music will take responsibility for building the Store. The plan is for it to be built by the community as was the Community Barn. We have talked to lots of people in the community willing to help, from experienced builders to enthusiastic amateurs.

FUNDING THE BARN

The project cost is £30k. We are applying to the National Lottery Awards for All for £20k.



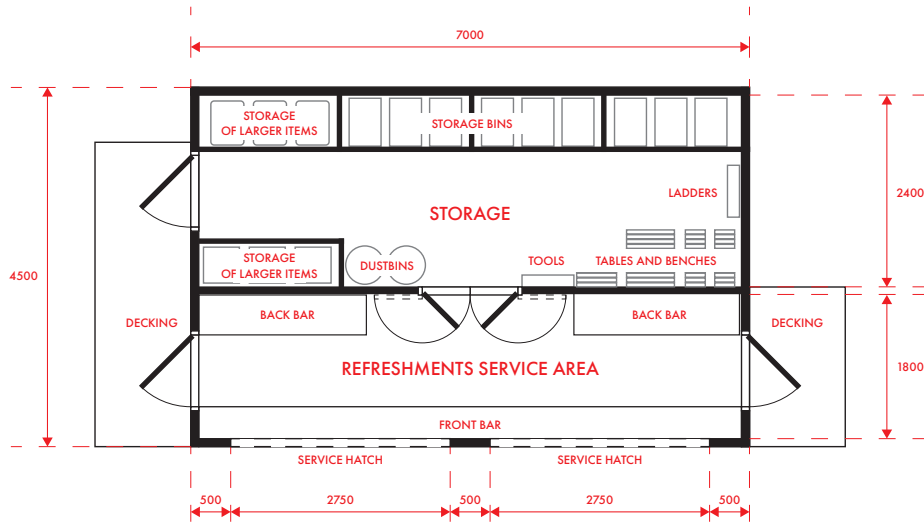
The Town Council is providing £3k, Sheep Music and the Carnival Committee are contributing £1k each and the final £5k will be sought from community contributions once the Lottery Funding has been secured.

TIMESCALE

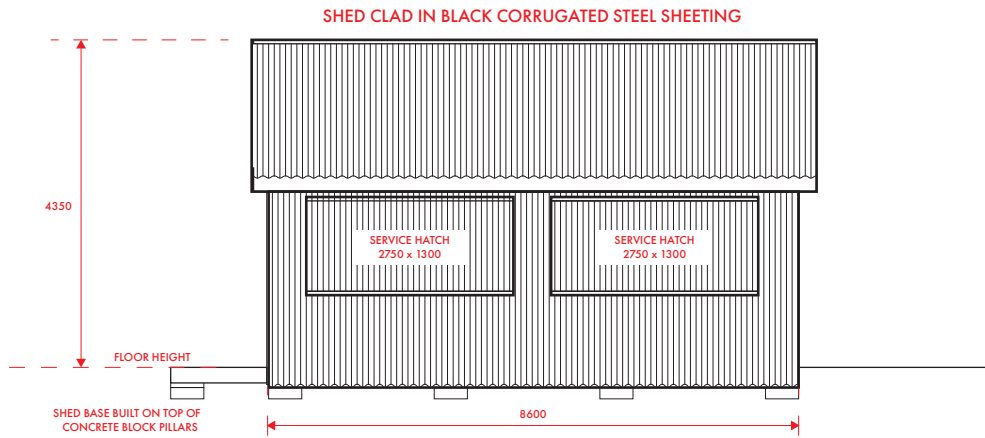
It is hope to have a decision from the Lottery and the planning permission by the end of March. Construction would start in April and it is hoped to have the new store ready for the 2025 Carnival.

The plans are available to view in the library window, and **if you think this project is a good idea, please can you sign the form in the library** - any comments are welcome.

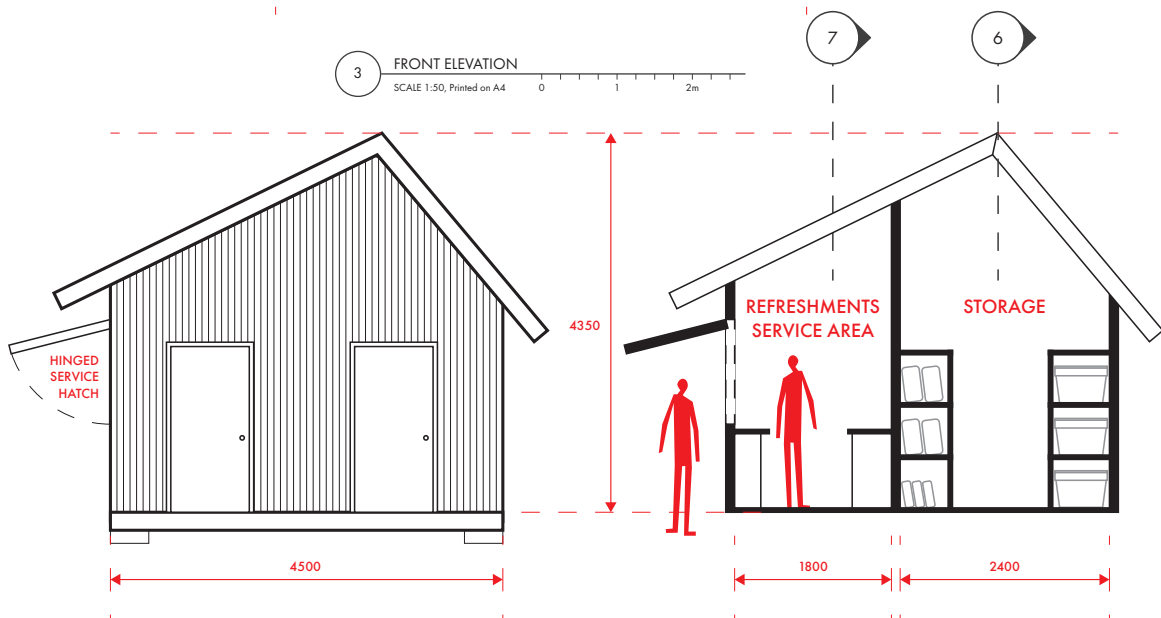
For more info contact: Cllr Colin Kirkby, tel: 01544 267811
email: colinkirkbyme@gmail.com



2 PLAN VIEW
SCALE 1:50, Printed on A4



3 FRONT ELEVATION
SCALE 1:50, Printed on A4



4 SIDE ELEVATION
SCALE 1:50, Printed on A4

5 SIDE CROSS-SECTION
SCALE 1:50, Printed on A4